



Walnut Ridge

Community Newsletter

Second Edition - Summer 2009

Walnut Ridge Community Association

Newsletters are also available online at www.walnutridgeonline.org

A Word From The President

The first day of Summer '09 is nearly here. Another Memorial Day has come and gone. Let us all be thankful for the freedom we have and to those that have made the supreme sacrifice of their lives in order to secure it.

To those residents who have left our community and to those that have recently joined us, the Board of Directors of our association and the community as a whole wish you well. Whether you are an established resident or have recently arrived, please be reminded of our fairly comprehensive Community Website which may be found at www.walnutridgeonline.org. Within our site you will find valuable contact information, as well as key documents pertaining to everyday life here in our neighborhood. In order to sustain and improve the quality of leadership on the Board of Directors, I ask all of you to feel free to communicate your comments and ideas via the site. The Board also wishes to continue to extend an invitation to anyone interested in participating in any open meeting or to become involved as a "member-at-large." It is our firm belief that with increased member participation, overall community improvement will surely follow.

Enjoy your summer and please remember that maintaining a good neighborhood begins with being a kind and considerate neighbor. Thank you.

Best Regards,

Edward Rose, President

Walnut Ridge Community Association

Board of Directors' Meetings

Board meetings are usually held on the third Thursday of the month beginning at 6:30 pm. **Homeowners** are welcome to attend the public portion of the monthly Board Meetings to share suggestions and concerns. If you plan to attend a meeting, **please call D.H. Bader Management Services (301-953-1955) to verify meeting dates, times and locations.**

Parking and Towing

In accordance with the Parking Guidelines (available on our website at www.walnutridgeonline.org), below are just *some* of the violations which could get your vehicle tagged and/or towed:

- > Parking in a Fire Lane (immediate tow-no questions asked).
- > Boats, boat trailers, recreational vehicles, all terrain vehicles or campers being stored in parking spaces or within the community.
- > Any vehicle (including but not limited to oversized pick-up trucks, SUV's, vans and trailered boats) parked in a parking space in such a way that the vehicle extends over the curb and into the sidewalk area or extends into the street and beyond the painted parking space lines.
- > Parked in another homeowner's parking space without permission.
- > Regular parking in a Visitor Parking Space or parked longer than 72 hours (3 days) in a visitor parking space.

Tow Fees

When any vehicle is towed by the towing company, the below towing fees will apply:



CASH ONLY!

\$250 Impound fee (additional charges apply for over 1 ton vehicles, vessels, etc.)

\$25.00 per day Storage Fee (occurring at midnight every night)

\$25.00 Admin Fee

\$35.00 Gate Fee

North County Towing - 410-255-4494

Hours: 8-6 M--F, 8-12 Sat

After hours appointments are available (\$35 fee applies).

Be mindful of our Parking Guidelines and don't park your vehicle in such a way that it could be towed!

You will save yourself a lot of headache and expense!

Anne Arundel County Website

Be sure to visit the Anne Arundel County website:

www.aacounty.org for the latest information about our County.



Here you'll find helpful information and links to various County agencies, services, phone numbers, County Government and School Closings or Delays.

Not Everyone Loves Your Pet

Although you may find it surprising, not everyone loves your pet like you do. As a matter of fact, there are many people (adults and children alike) who, for one reason or another, are absolutely terrified of dogs and/or cats and are made even more uncomfortable when a dog or cat approaches them, especially if it is not leashed.

Many pet owners claim that their pet is "in their control" even though it is not leashed, or they will say "he won't hurt you." Although these statements are intended to put the frightened person at ease, it may only heighten their fear because the animal is not leashed. By simply saying that the animal is "in my control" does not replace the leash law. This is yet one more reason to always leash your pet at all times. Besides that? It's the Law!

Exterior Paint Colors

If you are painting the outside of your home, remember to use the colors as required by the Association's Architectural and Environmental Standards:

- ◆ **Siding:** Olympic #59620A Premium Acrylic Solid Color Latex Stain, "Solid Cedar" color.
- ◆ **Trim:** Bruning #300-29 Exterior Alkyd Primer and painted with Bruning 3315-00 Exterior Semi-Gloss White.

If you have any questions about exterior requirements, please contact D.H. Bader Management. Paint/Stain questions? Call James at Maryland Paint & Decorating, Annapolis, 410-266-0057.

2009 Holiday Curbside Collection



Anne Arundel County
Waste Management Services
Recycling Division
2662 Riva Road, Suite 490
Annapolis, MD 21401
(410) 222-7951

For more information or for tips
to boost your recycling visit:



During a Holiday Week

Your curbside collections for recycling, trash, & yard waste will occur as follows:



HOLIDAY WEEK	NEXT COLLECTION DAY	
Week of New Year's Day	Thursday	JAN 1
Thursday collections will occur	→ Friday	JAN 2
Friday collections will occur	→ Saturday	JAN 3
Week of Memorial Day	Monday	MAY 25
Monday collections will occur	→ Tuesday	MAY 26
Tuesday collections will occur	→ Wednesday	MAY 27
Week of Independence Day	Saturday	JUL 4
no collection changes		
Week of Labor Day	Monday	SEP 7
Monday collections will occur	→ Tuesday	SEP 8
Tuesday collections will occur	→ Wednesday	SEP 9
Week of Thanksgiving Day	Thursday	NOV 26
Thursday collections will occur	→ Friday	NOV 27
Friday collections will occur	→ Saturday	NOV 28
Week of Christmas Day	Friday	DEC 25
Friday collections will occur	→ Saturday	DEC 26

Fireworks

The time has come again to remind residents that the discharging of most Fireworks are not allowed in our Community nor are they allowed in the State of Maryland without a permit.

Police will be notified if the use of illegal fireworks is observed in our Community.



Ongoing Problem...

Are you placing trash or recycling containers out on the weekends for a week day pick-up? If so, that's too early! Trash and recycling containers are not to be placed out for collection any earlier than 6:00 p.m. on the evening prior to pickup !

Open Space and Common Areas

The Community's Open Space and Common Areas are for the use of all residents. Parents please encourage your children to take their toys bikes and sporting equipment home with them when they are finished playing.

Dogs and Cats running loose will be reported to Animal Control!

Your Newsletter

The Walnut Ridge Community Newsletter is published quarterly and is a volunteer effort by residents of Walnut Ridge. If you would like to submit an idea for an article, please send an email to the Editor at editor@walnutridgeonline.org. The Editor reserves the right to print and/or edit all text.

DID YOU KNOW....

That our *Community Documents* are available on our website? Visit www.walnutridgeonline.org and click on Documents.

Board of Directors

The Board of Directors of Walnut Ridge Community Association consists of homeowners who volunteer their time to serve Walnut Ridge. Contact the Board by email at: board@walnutridgeonline.org

Officers

President: Ed Rose
Vice President: Laura Richardson
Treasurer: Bryan Moores
Secretary: Anita Ramundo

Members at Large

Michelle Henderson
Ziggi Nickel
Gloria Petit Clair

Property Management

John Sheehy, Property Manager
D.H. Bader Management Services
14435 Cherry Lane Court, Suite 210
Laurel, MD 20707
301-953-1955 Ext. 11
Jsheehy@dhbader.com
www.DHBbader.com

Anne Arundel County Farmers' Markets

The 2009 Farmers Market Season is underway! Delicious fresh local produce is available at several nearby locations! For general information, call 410-841-5770 or visit one of the local Farmers Markets:



Anne Arundel County Farmers' Market

Annapolis: Riva Road & Harry S. Truman Parkway
Saturday: 7:00 a.m. to Noon April 4 - December 19
Tuesday: 7:00 a.m. to Noon June 9- October 27
Contact: Brenda Conti 410-349-0317
WIC and Senior FMNP Checks Accepted

Severna Park Farmers' Market

Ritchie Highway (Rt. 2) & Jones Station Road
Saturday: 8:00 a.m. to Noon April 25 - October 31
Contact: Anita Robertson 410-827-9192
WIC and Senior FMNP Checks Accepted

Westfield Annapolis Farmers' Market

Route 50 & Jennifer Rd.
Sunday: 11:00 a.m. to 3:00 p.m. March 15 - December 31
Contact: Brenda Conti 410-349-0317
WIC and Senior FMNP Checks Accepted

The Centre at Glen Burnie Farmers' Market

Glen Burnie Mall in front of BEST BUY
Wednesday: 9:00 a.m. to 12:00 p.m. June 24 - August 26
Contact: Brenda Conti 410-349-0317
WIC and Senior FMNP Checks Accepted

~~~~~  
*If you see trash on our streets or open spaces,  
please be a good neighbor and pick it up!*

## About Yard Sales

For residents wishing to hold a Yard Sale, here are some general guidelines to be followed:

- Board approval **is required** to hold a Yard Sale on any of the community's common areas, including the Play Ground and the grassy areas along Walnut Ridge Drive. When requesting approval from the Board, please send an email to the Board at [board@walnutridgeonline.org](mailto:board@walnutridgeonline.org) in sufficient time to allow for the Board's response.
- Board approval **is also required** to hold a Yard Sale in any parking area within the Association-owned streets (Almond, Hazel Nut, Peach or Tanook). Again, when requesting approval from the Board, please send an email to the Board at [board@walnutridgeonline.org](mailto:board@walnutridgeonline.org) in sufficient time to allow for the Board's response.
- Approval is not needed to hold a Yard Sale in a resident's own yard.
- If a Yard Sale will be held in a resident's own yard, inform your neighbors of your intention to hold the Yard Sale by providing to them, in advance, the date(s) and time(s) of your sale. Residents should be courteous to their neighbors and not let shoppers trespass onto other residents' property.
- Vehicular traffic cannot be impeded on our streets and Yard Sale shoppers are not to park in other residents' designated parking spaces.
- Inform D..H. Bader Management Company ([jsheehy@dhbader.com](mailto:jsheehy@dhbader.com)) of the date(s) and time(s) of your planned Yard Sale.
- If you post signs anywhere in the Community, be sure to remove them when your sale ends.



### Peach Cake

|                        |                                |
|------------------------|--------------------------------|
| 1 tbs butter, softened | 3/4 c sugar, mixed with...     |
| 1 c sugar              | 2 tsp cinnamon                 |
| 2-1/2 c flour          | 5 large Peaches, peeled/sliced |
| 3 tsp baking powder    | 2 tbs butter, melted           |
| 1-1/2 c milk           |                                |

Preheat oven to 350. With electric mixer, blend first five ingredients. Spread in greased and floured 15x10" jelly roll pan, or 13x9" plus one 8" cake pan. Sprinkle half of cinnamon/sugar mixture lightly over dough base. Arrange peach slices by rows on top of base. Sprinkle with remainder of cinnamon/sugar mixture and drizzle melted butter over all. Bake for 25-30 minutes. (For thicker dough, omit 8" cake pan -- use 13x9" pan only.)

**Vacant Houses**

Nearly every section of our community has at least one vacant house for sale. Please be observant and immediately report any suspicious activities or acts of vandalism. You may phone the police (9-1-1) if the activity is in progress. If you're not sure who to notify, you may call the non-emergency number of the AA County Police (410-222-8050) and they will advise you. For **non-criminal violations**, you may also want to call Management (301-953-1955 Ext. 11) and even e-mail the Board of Directors ([board@walnutridgeonline.org](mailto:board@walnutridgeonline.org))

Also, specifically regarding vacant houses that are "For Sale," it has been observed that some residents and guests have been parking in the assigned parking spaces of these vacant houses. This should not be done without verifiable permission from the property owner (individual, real estate company, bank, etc.) If you obtain permission to park in the assigned space of a vacant house, put a note in the front window of your car, including the name and phone number of the person who gave you permission to park there. If a real estate agent arrives to show the house and you are parked in the assigned space(s), the agent (and maybe the prospective buyer) may have to park illegally elsewhere in the community.

North County Towing Co. has been alerted to this problem. They may cruise our community to check for cars illegally parked at vacant houses (and, of course, other violations) after dark. North County Towing has been known to be very aggressive in the past.

If you have the need to park more than two cars at a time, please park your extra vehicle(s) along a non-fire-lane curb or on Walnut Ridge Drive.

Your cooperation is appreciated.

**Tips to Boost AC Efficiency in Summer**

- Keep shades drawn during the day.
  - Set temperature to 78-80 during day when you are most likely at work.
  - Install an attic fan and set thermostat to draw heat from attic, when it goes above 90.
  - Invest in a register booster (available at Home Depot). It's a small fan in a rectangular shallow box that sits over any register and plugs into the wall. It will pull air and increase the cooling (or heating ) potential of any room that it is installed in.
  - Invest in ceiling fans.
- Consult your HVAC manufacturer before making any adjustments to avoid damaging your system.



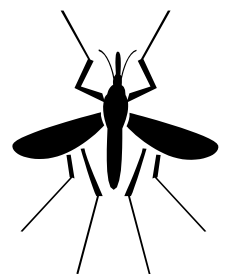
**Moving In or Moving Out?**

To make advance arrangements for pick up of excessive trash, card board boxes, moving materials and the like, please call Anne Arundel County Waste Management at 410-222-6100.



**Mosquito Spraying**

This spring and summer, Walnut Ridge will again be sprayed for Mosquitoes. Chemically sensitive persons may be affected by the chemicals used during the spraying.



For more information on the Mosquito Control Procedures, please visit the Maryland Department of Agriculture's website: [www.mda.state.md.us](http://www.mda.state.md.us) and click on Plants and Pests, or call 410-841-5870.

**Visit us on the Web!**

[www.walnutridgeonline.org](http://www.walnutridgeonline.org)

**Give a Hoot, Don't Pollute!**  
**Walnut Ridge Trash and Recycling**

*Submitted by Michelle Henderson*

The aftermath of our trash and recycling collection services can leave much to be desired. All one has to do is take a morning walk around the community to see trash and recycling that did not make it into their trucks. Some days are better than others but more often than not, there are bits and pieces of trash and recycling rolling around our parking lot and common areas just waiting to be placed back into the trash cans and recycling bins for the next pick-up.

Some of this situation could be avoided if residents properly utilized trash cans and recycling bins instead of leaving trash bags and loose recycling on the curb. The other reason (presumably) is bad aim on the part of the trash and recycling folks. We could keep count of who is to blame for what - but either way, the end result is always the same, our community after trash/recycling pick-up typically looks awful.

And so there are a handful of residents that care enough to pick up this residual trash and recycling and place it back into containers. And those efforts are to be commended! *But here's the thing* – nobody wants to pick up someone else's trash. So if you know that you really did not place your trash/recycling on the curb in the proper manner and now it is lying on the ground, please pick it up. And even if you know you placed your trash on the curb in the proper containers and you still find it blowing around the community or lying on the ground, please pick it up.

If everyone pitched in to keep our community clean, we would accomplish many things to include setting a positive example for our children and other communities - and we would have the cleanest subdivision around! Let's prove to ourselves that we indeed "Give a Hoot and Don't Pollute"!

Thank you!!

---

**It's Dumpster Time!**

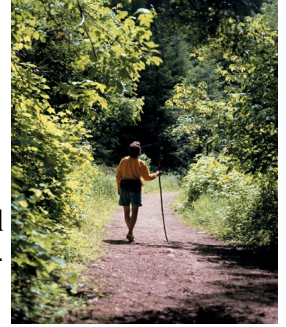
Plan Ahead! A Dumpster will be placed in the Cul-De-Sac on Wednesday, June 17th and will be picked up by 8:00 a.m. on Friday, June 19th. Please be considerate and do not overload the dumpsters, or place prohibited items in the dumpsters (see list below).

Please **DO NOT** place any of these items in the dumpsters, as the county will remove them: hazardous waste, junk automobiles, trailers, boats, gas and propane tanks, tires, oil drums or tanks, paint, liquids, refrigerators or air conditioners. For the proper disposal of the prohibited items mentioned above, please call the County at (410) 222-6108. The dumpsters will be monitored, so please do not abuse this privilege.



## A Word From The Walnut Ridge Wanderer

*The Walnut Ridge Wanderer reports on various observations around the community. To preserve anonymity, the identity and gender of the Wanderer will not be revealed. (However, I will say that this Editor is not the Wanderer.)*



It is so good to be out and about at this time of year. Everything is **green and growing**. (Except our children who, thankfully are not turning green, but they are growing.)

The children are **growing** nicely. Those little babies are now “schoolers” and running all over the playground. Good for them. Please be alert for children crossing streets. Their enthusiasm is growing faster than their sense of caution. Helmet alert for bike riders and skateboarders! A brain is a precious thing.

The enthusiasm for the change of season is also noted in our animals. Remember, county law says that dogs cannot run free. We do not have a “dog park”, but luckily we are close to one. I saw a few near misses of dogs darting into the street. Their enthusiasm is greater than their brains. Protect your beloved pets.

The **green** part is amazing. Is it my imagination that our landscaping is very green and very tall all of a sudden? Last year, the landscapers were asked not to mow as often because of the drought. Little puffs of dust were noted during mowing. The lawns looked sad.

This year it seems as though mowing is needed all the time. I was ankle deep putting out my trash recently. No complaints, just joy at the wonders of the season.

Now as to concerns: Just a few housekeeping issues for our residents.

- Please check your trash schedule to verify pick-ups at holiday time. The pick-up after Memorial Day caught residents by surprise. I wish I had my camera with me to capture the picture of a long row of trash cans on Hazel Nut Court waiting for the pick-up that was rescheduled. Unfortunately, trash left out too long becomes a problem.
- As soon as trash is put out, the animals in the area are on alert. Bags have been broken into and remains left on the grass.
  - Solutions: Put out trash after 6:00pm on the night before pick-up.
  - Clean up after the pick-up!

I see folks are already doing work on their homes after our recent inspection. Good for you. Get it out of the way so you can enjoy the summer.

Curb appeal is everything in this housing market. A house in need of maintenance lowers the home resale value for all of us. Walnut Ridge has a great location, with an attractive entry road and landscaping on each corner and around mail boxes. Now it's time to take a look at your house. Is it clean? Are the lawns and plantings maintained? What does your entryway say about the folks who live inside?

Time for me to sign-off and start planning for the annual “dumpster fill”. What you can't give away, sell, recycle, can be put in the dumpster. **Please, no yard waste!**

See you at the dumpster!

*Walnut Ridge Wanderer*

## IMPORTANT NUMBERS

|                                                             |                      |
|-------------------------------------------------------------|----------------------|
| AA County – Main Number .....                               | 410-222-7000         |
| AA County <b>Fire</b> – Emergency Calls .....               | 911                  |
| AA County <b>Fire</b> – Non-Emergency .....                 | 410-222-8300         |
| AA County <b>Police</b> -Emergency .....                    | 911                  |
| AA County <b>Police</b> – Non-Emergency .....               | 410-222-8050         |
| AA County Health Nuisance Complaints .....                  | 410-222-7364         |
| AA County Department of Public Works .....                  | 410-222-7940         |
| AA County Department of Public Works/Waste Management ..... | 410-222-6100         |
| Animal Control .....                                        | 410-222-8900         |
| Annapolis City <b>Police</b> .....                          | 410-268-9000         |
| Anne Arundel Medical Center .....                           | 443-481-1000         |
| BGE – All Calls .....                                       | 800-685-0123         |
| BGE – Report Power Outage .....                             | 877-778-2222         |
| Broadneck Library .....                                     | 410-222-1905         |
| Broadstripe Cable (formerly Millennium) .....               | 410-987-9300         |
| Bulk Item/Waste Removal .....                               | 410-222-6104         |
| Cable – Broadstripe (formerly Millennium) .....             | 410-987-9300         |
| Cable – Comcast Cable .....                                 | 800-266-2278         |
| Cape St. Claire Volunteer <b>Fire</b> Department .....      | 410-757-3434         |
| Comcast Cable .....                                         | 800-266-2278         |
| CLT Utilities, Inc. ....                                    | 410-697-2026         |
| D.H. Bader Management Services .....                        | 301-953-1955 Ext. 11 |
| Department of Public Works .....                            | 410-222-7940         |
| Department of Public Works/Waste Management .....           | 410-222-6100         |
| Environmental Health .....                                  | 410-222-7364         |
| Health Nuisance Complaints .....                            | 410-222-7364         |
| J&W Utilities .....                                         | 410-827-8516         |
| Maryland State <b>Police</b> Headquarters .....             | 410-653-4200         |
| North County Towing .....                                   | 410-255-4494         |
| Post Office – Legion Avenue .....                           | 410-573-0953         |
| Poison Control .....                                        | 800-492-2414         |
| Recycling & Yard Waste .....                                | 410-222-6100         |
| Salvation Army (Donated Items Pickup) .....                 | 410-263-4019         |
| Towing – North County Towing .....                          | 410-255-4494         |
| Trash Pickup Problems .....                                 | 410-222-6104         |
| Water and Sewer Bills .....                                 | 410-222-1144         |
| Water & Sewer Emergencies (no water) .....                  | 410-222-8400         |